



CATALOGUE

SOLAR POWERED LIGHTS

GREEN LIGHTING - GREEN LIFE
SMART HOME - SMART CITY - SMART FARM



TABLE OF CONTENT

GENERAL INFORMATION **SOLAR-POWERED LED LIGHTS**

Operating principle 03

Advantages 04

Applications 05

PRODUCTS

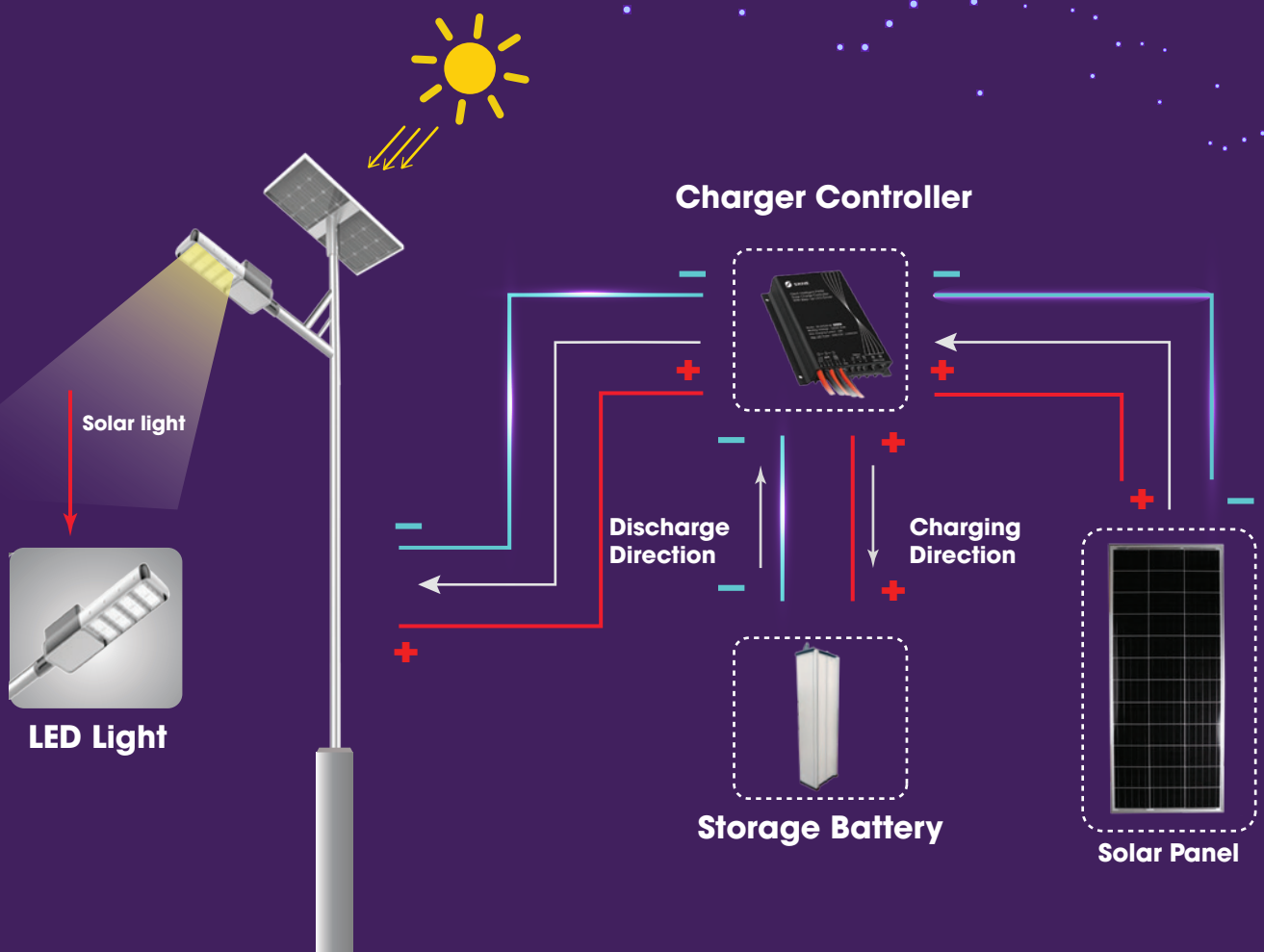
Solar street lights 06
(Separate-panel / Integrated-panel / Hybrid / Radar solar lights)

Solar flood lights 12

Professional solar lights 16

Solar light accessories 22

OPERATING PRINCIPLE
SOLAR PANELS ABSORB
SUNLIGHT ENERGY AND CONVERT
IT INTO DIRECT ELECTRICAL
ENERGY FOR LIGHTING



ADVANTAGES



Saving electric cost



Long lifetime:
average 10 years



Simple installation
wiring-free



Suitable for many
terrain



Endlessly natural
resources



Safe easy
maintenance



Protect the environment

For the Green Earth

APPLICATIONS

HIGHWAYS



PARKING LOTS



INDUSTRIAL PARKS



NEW COUNTRYSIDES



PARKS, SCHOOL YARDS, HOSPITALS



FARMS, CAMPS



LANDSCAPES, RESORTS, HISTORIC HERITAGES,
SPIRITUAL ZONES



BORDER LINES



WAREHOUSES, HARBORS



BILLBOARDS



SOLAR STREET LIGHT

SEPARATE-PANEL
SOLAR LIGHT

INTEGRATED-PANEL
SOLAR LIGHT

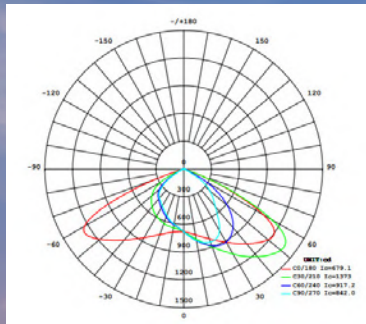
HYBRID
SOLAR LIGHT

RADAR
SOLAR LIGHT



SOLAR STREET LIGHT

SEPARATE-PANEL SOLAR LIGHT



ADVANTAGES

- Using specialized Samsung LED with high efficiency for outdoor lighting, with exclusivity Vietnam.
- Light distribution is suitable for street lighting.
- The structure of housing and fixture is sturdy, water-proof (IP66) and safe to install.
- Lithium LiFePO4 technology solar battery and high efficiency solar panels, long lifetime, reducing replacement costs.
- Saving electricity, eco-friendliness, scenic reservation.

FEATURES

- Five-level dimming with remote control
- On/ off lighting by using the ambient light sensor

APPLICATIONS

- Village paths, inter-village roads, main roads, major district roads, inter-provincial roads, school yards, factories, public areas, areas with low light or without electricity.
- Border lines, parks, hospitals, etc.
- Roads in industrial parks and urban areas.

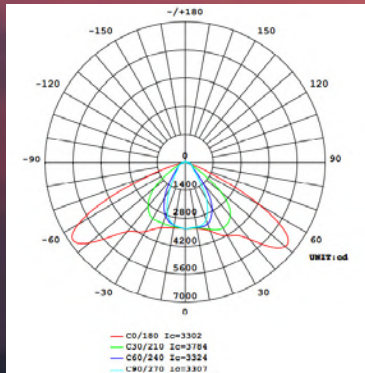
SPECIFICATIONS

Model	Power (W)	Luminous flux (lm)	CCT (K)	Light-up duration (Hours)	Arm hole diameter (mm)	Warranty (years)	IP	Battery			Solar panel				Wire length (m)
								Technology	Voltage/ Capacity	Lifespan (years)	Technology	Voltage (V)	Lifespan (years)	Solar panel dimension (mm)	
CSD01.SL.RF 25W	25	2100	5000 6500	12	60	2	66	LITHIUM LiFePO4	3.2 V/20 Ah	>10	Poly-crystalline 25W	6	>20	530x350x17	1.0
CSD01.SL.RF 35W	35	2700	5000 6500	12	60	2	66	LITHIUM LiFePO4	3.2 V/30Ah	>10	Poly-crystalline 35W	6	>20	670x350x17	1.0
CSD02.SL.RF 50W	50	3500	5000 6500	12	60	2	66	LITHIUM LiFePO4	3.2 V/40Ah	>10	Poly-crystalline 50W	6	>20	670x450x25	1.0
CSD01.SL.RF V2 30W	30	3200	5000 6500	12	60	3	66	LITHIUM LiFePO4	3.2 V/50 Ah	>10	Poly-crystalline 65W	5	>20	670x532x30	2.5
CSD01.SL.RF V2 50W	50	4600	5000 6500	12	60	3	66	LITHIUM LiFePO4	3.2 V/65Ah	>10	Poly-crystalline 95W	5	>20	758x670x30	2.5

*Included light and solar panels (pole excluded)

SOLAR STREET LIGHT

SEPARATE-PANEL SOLAR LIGHT



ADVANTAGES

- Used to illuminate the areas without electricity or with tough access to the power grid.
- Eco-friendly, energy-saving
- LiFePO₄ Lithium solar battery and solar panels have high efficiency, long lifetime, thus reducing the replacement costs.
- Scenic reservation thanks to no wiring. Safety, no electric shock.
- Die-cast aluminum housing for high strength and good heat resistance and strong impact resistance.
- Dimming scenes can be scheduled by users.
- Optical distribution suitable for street lighting.

FEATURES

- Integrated light sensor, equipped with remote control
- Dimmable, adjusted upon light intensity
- MPPT controller with 5 lighting modes preset

APPLICATIONS

- Main roads, major district roads, inter-provincial roads, school yards, factories, public areas, areas lacking or without access to power grid, border lines, parks, hospitals, industrial zones, urban areas, etc.
- Wireless connection, easy installation, energy saving and environment protection, long lifespan, no power grid cost.

SPECIFICATIONS

Model	Power (W)	Luminous flux (lm)	CCT (K)	Light-up duration (Hours)	Arm hole diameter (mm)	Warranty (years)	IP	Battery			Solar panel				Wire length (m)
								Technology	Voltage/Capacity	Lifespan (years)	Technology	Voltage (V)	Lifespan (years)	Solar panel dimension (mm)	
CSD02.SL 70W	70	8000	5000 6500	12	60	3	66	LITHIUM LiFePO ₄	12.8V/42 Ah	>10	Mono-crystalline 100W	18	>20	1225x520x30	3.5
CSD02.SL 100W	100	10500	5000 6500	12	60	3	66	LITHIUM LiFePO ₄	12.8V/54 Ah	>10	Mono-crystalline 130W	18	>20	1120x670x35	3.5
CSD02.SL 120W	120	12000	5000 6500	12	60	3	66	LITHIUM LiFePO ₄	12.8V/54 Ah	>10	Mono-crystalline 170W	18	>20	1480x670x35	3.5
CSD06.SL 100W	100	12000	4000 6500	12	60	5	66	LITHIUM LiFePO ₄	25.6V/48 Ah	>10	Mono-crystalline 210W	36	>20	1500x680x35	3.0

*Included light and solar panels (pole excluded)

SOLAR STREET LIGHT

INTEGRATED-PANEL SOLAR LIGHT



ADVANTAGES

- Wireless connection, easy installation, energy saving and environment protection, long lifespan, no power grid costs.
- Optical distribution suitable for street lighting.
- Using PC/ PMMA LENS with high optical transmissivity.

FEATURES

- Equipped with remote control, integrated motion sensor.
- Dimmable.

APPLICATIONS

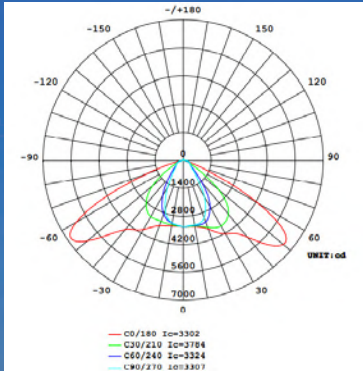
- Main roads, major district roads, inter-provincial roads, border lines, industrial zones, urban areas, etc.
- Factories, hospitals, parks, school yards, etc.
- Public areas, areas lacking or without access to power grid.

SPECIFICATIONS

Model	Power (W)	Luminous flux (lm)	CCT (K)	Light-up duration (Hours)	Arm hole diameter (mm)	Warranty (years)	IP	Battery			Solar panel		
								Technology	Voltage/ Capacity	Lifespan (years)	Technology	Voltage (V)	Lifespan (years)
CSD02.SL.RAD 30W	30	2000	5000 6500	12	60	2	66	LITHIUM LiFePO ₄	3.2V/25Ah	>10	Mono-crystalline 25W	6	>20
CSD03.SL 300W AIO	300	3000	6500	>18	48 ÷ 60	2	65	LITHIUM LiFePO ₄	3.2V/30Ah	>10	Poly-crystalline 40W	6	>20
CSD03.SL 400W AIO	400	4000	6500	>18	48 ÷ 60	2	65	LITHIUM LiFePO ₄	3.2V/40Ah	>10	Mono-crystalline 45W	6	>20
CSD03.SL 500W AIO	500	5000	6500	>18	48 ÷ 60	2	65	LITHIUM LiFePO ₄	3.2V/55Ah	>10	Mono-crystalline 55W	6	>20

HYBRID SOLAR STREET LIGHT

SEPARATE-PANEL SOLAR LIGHT



ADVANTAGES

- Integrates both solar energy and 220VAC electricity, suitable for places with little sunshine or places where 100% lighting is required for 12 hours (all night) such as urban streets, intra-provincial roads, etc.
- Optical distribution suitable for street lighting.
- OEM/ ODM services are available.

FEATURES

- Built-in light sensor enables on/ off automatic turning; Setting maximum power mode or multi-level dimming modes (using remote control) is available.
- The light automatically switches from solar power to electricity when the battery is low.

APPLICATIONS

- Main roads, major district roads, inter-provincial roads, border lines, industrial zones, urban areas, etc.
- Factories, hospitals, parks, school yards, etc.
- Public areas, areas lacking or without access to the power grid.

SPECIFICATIONS

Model	Power (W)	Luminous flux (lm)	CCT (K)	Light-up duration (Hours)	Arm hole diameter (mm)	Warranty (years)	IP	Battery			Solar panel				Wire length (m)
								Technology	Voltage/ Capacity	Lifespan (years)	Technology	Voltage (V)	Lifespan (years)	Solar panel dimension (mm)	
CSD02.SL.HB 80W	80	8000	5000 6500	12	60	3	66	LITHIUM LiFePO4	12.8 V/42 Ah	>10	Mono-crystalline 100W	18	>20	1225x520x30	3.5
CSD08.SL.HB 100W	100	10500	5000 6500	24	60	3	66	LITHIUM LiFePO4	25.6 V/30 Ah	>10	Mono-crystalline 130W	36.5	>20	1160x590x30	3.5
CSD08.SL.HB 120W	120	12000	5000 6500	24	60	3	66	LITHIUM LiFePO4	25.6 V/30 Ah	>10	Mono-crystalline 150W	36.5	>20	1380x590x30	3.5

*Included light and solar panels (pole excluded)

RADAR SENSOR SOLAR STREET LIGHT



FEATURES

- Smart charge/ discharge controller with battery protecting feature
- Remote control with 5 lighting modes
- Turning on/ turn off by light sensor or remote control and motion sensor

APPLICATIONS

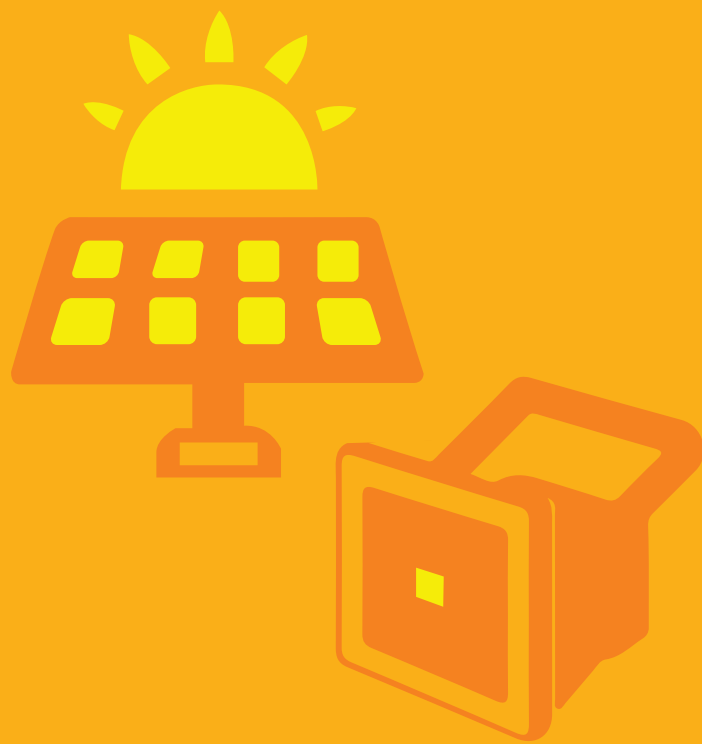
- Village roads, inter-village roads, commune and district roads, etc.

SPECIFICATIONS

Model	Power (W)	Luminous flux (lm)	CCT (K)	Light-up duration (hour)	Arm hole diameter (mm)	IP	CRI	Beam angle	Dimension (mm)	Warranty (years)	Battery		Solar panel		Solar panel height (m)
											Technology	Voltage/ Capacity	Technology	Voltage (V)	
CSD02.SL.RF.RAD 200W	200	2000	5000 6500	>12	60	66	>70	80 x 140° (type II)	428x174x68	2	LITHIUM LiFePO ₄	3.2 V/20 Ah	Poly-crystalline 25W	6	4-6
CSD02.SL.RF.RAD 300W	300	3500	5000 6500	>12	60	66	>70	80 x 140° (type II)	556x212x79	2	LITHIUM LiFePO ₄	3.2 V/40 Ah	Poly-crystalline 60W	6	5-7

*Included light and solar panels (pole excluded)

SOLAR FLOOD LIGHT





30W

40W

50W

70W

100W

150W

**SAMSUNG
LED**
Illuminated

CP02.SL.RF

ADVANTAGES

- Using Samsung LED for high efficiency, excellent quality and suitable for outdoor lighting.
- Strong structure (Unique, water-proof, durable die-cast aluminum housing, firm and safe solar panel fixture in comparison with peer products).

FEATURES

- Using light sensor or remote control for on/off modes
- Dimmable

APPLICATIONS

- Widely used in yards, warehouses, billboards, landscapes, etc.

SPECIFICATIONS

Model	Power (W)	Luminous flux (lm)	CCT (K)	Light-up duration (Hours)	Warranty (years)	IP	Battery			Solar panel				Wire length (m)
							Technology	Voltage/ Capacity	Lifespan (years)	Technology	Voltage (V)	Lifespan (years)	Solar panel dimension (mm)	
CP02.SL.RF 30W	30	1200	3000 6500	12	2	65	LITHIUM LiFePO ₄	3.2 V/15 Ah	>10	Poly-crystalline 20W	6	>20	450x350x17	6.5
CP02.SL.RF 40W	40	1300	3000 6500	12	2	65	LITHIUM LiFePO ₄	3.2 V/20 Ah	>10	Poly-crystalline 30W	6	>20	610x350x17	6.5
CP02.SL.RF 50W	50	1700	3000 6500	12	2	65	LITHIUM LiFePO ₄	3.2 V/20 Ah	>10	Poly-crystalline 35W	6	>20	670x350x17	6.5
CP02.SL.RF 70W	70	2000	3000 6500	12	2	65	LITHIUM LiFePO ₄	3.2 V/30 Ah	>10	Poly-crystalline 50W	6	>20	670x540x25	6.5
CP02.SL.RF 100W	100	3000	3000 6500	12	2	65	LITHIUM LiFePO ₄	3.2 V/40 Ah	>10	Poly-crystalline 65W	6	>20	760x670x30	6.5
CP02.SL.RF 150W	150	4000	3000 6500	12	2	65	LITHIUM LiFePO ₄	3.2 V/60 Ah	>10	Poly-crystalline 90W	6	>20	890x670x30	4.5



200W

300W

CP03.SL

ADVANTAGES

- Smart charge/ discharge controller with battery protecting feature, 5 dimming levels enable long-time operation and flexible lighting.
- Embedded battery level indicator light
- No power grid connection required, easy installation

FEATURES

- Using an ambient light sensor or remote control for on/off modes
- Motion radar sensor

APPLICATIONS

- Widely used in yards, warehouses, billboards, landscapes, etc.

SPECIFICATIONS

Model	Power (W)	Luminous flux (lm)	CCT (K)	Light-up duration (Hours)	Warranty (years)	IP	Battery			Solar panel				Wire length (m)
							Technology	Voltage/ Capacity	Lifespan (years)	Technology	Voltage (V)	Lifespan (years)	Solar panel dimension (mm)	
CP03.SL 200W	200	1200	6500	13	2	66	LITHIUM LiFePO ₄	3.2V/15 Ah	>10	Poly-crystalline 18W	6	>20	400x350x17	5
CP03.SL 300W	300	1800	6500	13	2	66	LITHIUM LiFePO ₄	3.2V/27.5 Ah	>10	Poly-crystalline 30W	6	>20	600x350x17	5



**SAMSUNG
LED**
Illuminated

CP05.SL.RF 350W

ADVANTAGES

- Using Samsung LED for high efficiency, excellent quality and suitable for outdoor lighting.
- Strong structure (Unique, water-proof, durable die-cast aluminum housing, firm and safe solar panel fixture in comparison with peer products).

FEATURES

- Using light sensor or remote control for on/off modes
- Dimmable

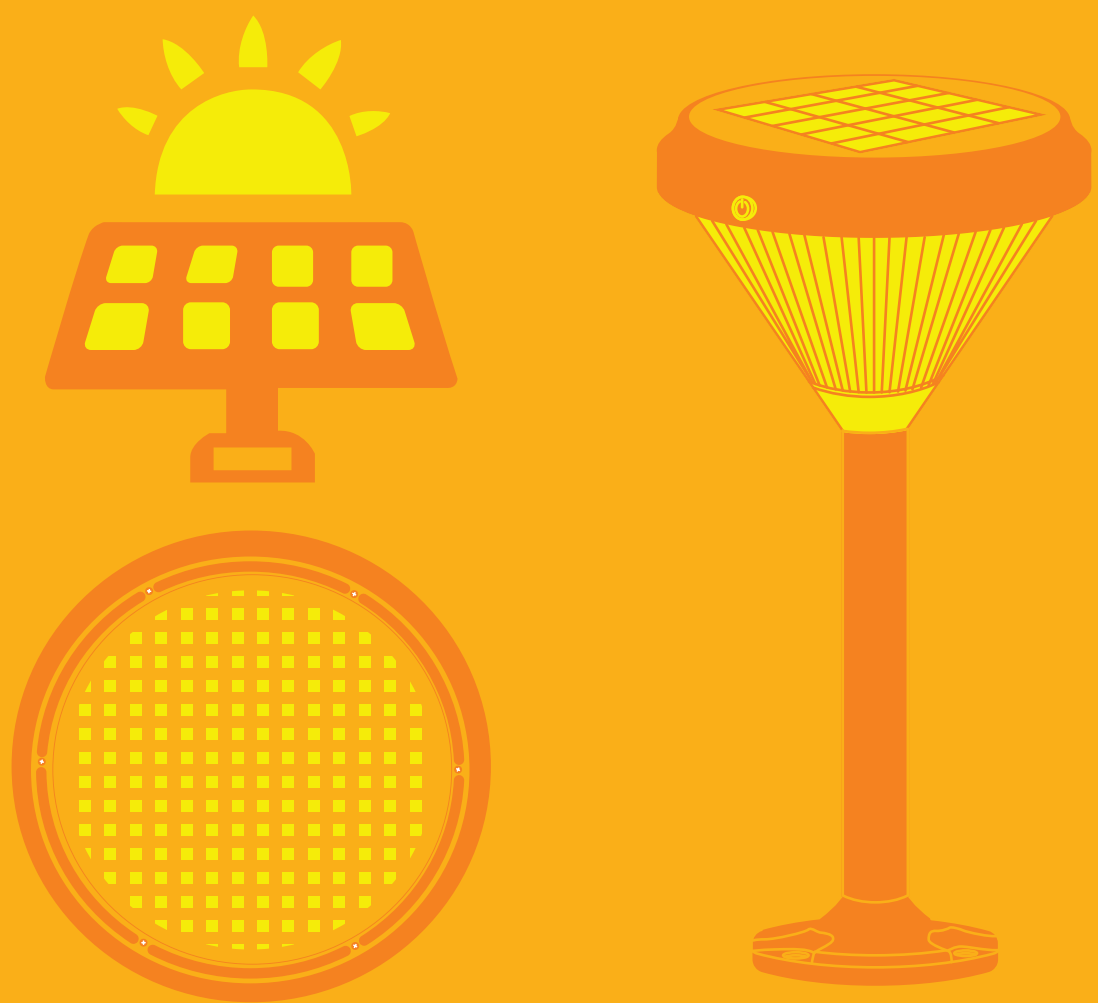
APPLICATIONS

- Widely used in yards, warehouses, billboards, landscapes, etc.

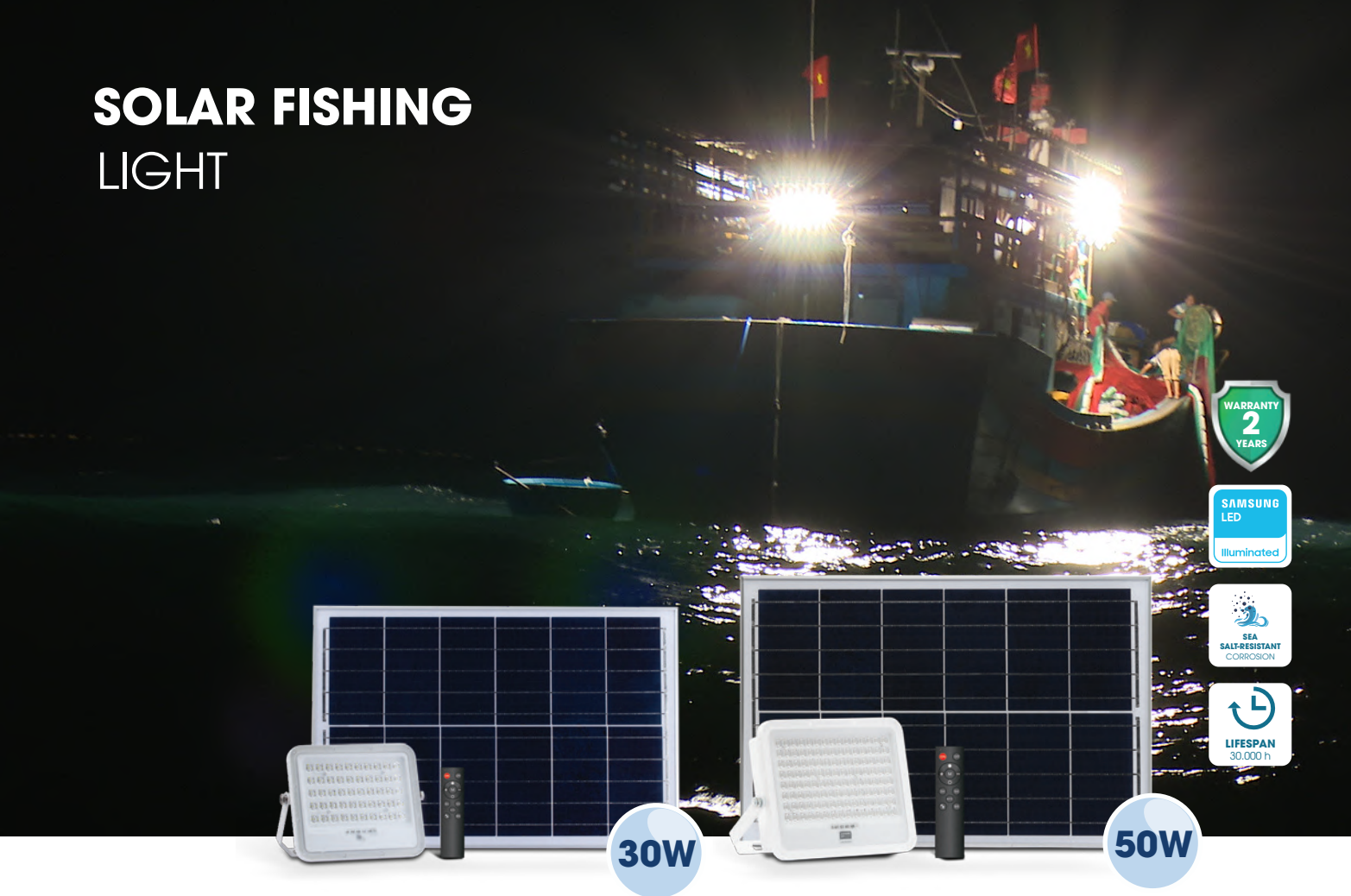
SPECIFICATIONS

Model	Power (W)	Luminous flux (lm)	CCT (K)	Light-up duration (Hours)	Warranty (years)	IP	Battery			Solar panel				Wire length (m)
							Technology	Voltage/ Capacity	Lifespan (years)	Technology	Voltage (V)	Lifespan (years)	Solar panel dimension (mm)	
CP05.SL.RF 350W	350	3500	3000 6500	12	2	65	LITHIUM LiFePO4	3.2 V/35 Ah	>10	Poly-crystalline 55W	6	>20	670x600x25	6.5

PROFESSIONAL **SOLAR LIGHT**



SOLAR FISHING LIGHT



ADVANTAGES

- Harsh condition resistance (sea salt anti-corrosion).
- Using Samsung LED packages for strong, clear and stable light.
- Sturdy structure, withstanding vibration, water-proof (IP66)
- No interference with other communication devices.

FEATURES

- Using light sensor or remote control to control on/off modes
- 5 dimming levels

APPLICATIONS

- Used in a tough environment (environment with high salt concentration, sea water, islands, on ships, boats, etc.)
- Used for lighting on ships, landscapes, tourist areas, and coastal areas.

SPECIFICATIONS

Model	Power (W)	Luminous flux (lm)	CCT (K)	Light-up duration (hours)	IP	Warranty (Year)	Battery			Solar panel			Wire length (m)	
							Technology	Voltage/ Capacity	Lifespan (Year)	Poly-Crystalline Technology	Voltage (V)	Lifespan (Năm)		Solar panel dimension (mm)
CP02.SL. RF 30W.TC	30	1200	3000 6500	12	65	2	LITHIUM LiFePO ₄	3.2V/ 15Ah	>10	20W, anti-corrosion paint	6	>20	450x350x17	6.5
CP02.SL. RF 50W.TC	50	1700	3000 6500	12	65	2	LITHIUM LiFePO ₄	3.2V/ 20Ah	>10	35W, anti-corrosion paint	6	>20	670x350x17	6.5

SOLAR LIGHTS FOR STORES, WAREHOUSES



ADVANTAGES

- Using Samsung LED for high efficiency, long lifespan
- High brightness
- Sturdy structure, optimal design for harmony between brightness/ battery/ solar panels

APPLICATIONS

- Used in warehouses, factories, stores, stalls, etc.

FEATURES

- Using a light sensor or remote control for on/ off modes.
- Dimming.

SPECIFICATIONS

Model	Power (W)	Luminous flux (lm)	CCT (K)	Solar battery	Sensor	Solar panel	Solar panel dimension (mm)	LED	Light-up duration (h)	Wire length (m)
UFO01.SL.RF 150W	150	1500	6500	Lithium ion 3.2 V/20 Ah	Lighting sensor	6V/30W Poly Crystalline	600x350x17	SMD 3030 SAMSUNG	>12	4.5
UFO01.SL.RF DM 150W	150	1500	3000/4000/6500	Lithium ion 3.2 V/20 Ah	Lighting sensor	6V/30W Poly Crystalline	600x350x17	SMD 3030 SAMSUNG	>12	4.5

SOLAR POWER BATTERY CHARGER



ADVANTAGES

- IP box included: Integrated protection modes for IP 66 against short circuit, IP box connection, 2 circuit breakers, IP wire, etc.
- High reliability: heat protection, overcharge and over discharge protection, short circuit protection, open circuit protection, etc.
- Setting by functional buttons.
- Highly effective and intelligent 3-stage PWM charge management.
- IP66 waterproof case for sea salt anti-corrosion, circuit breaker included to ensure safety.

APPLICATIONS

- Used to charge batteries for domestic use, business entity, fishing vessels, etc.

SPECIFICATIONS

Model	Battery voltage (V)	Charging mode	Nominal charging current (A)	Nominal dis-charge current (A)	USB output	Protective Circuit Breaker	Dimension of charger (mm)	Dimension of solar panel (mm)	Protective plastic box	Wire size (m)	Solar panel
SA01.SL 200W	12/24 (Automatically identify)	For water battery, dry battery, lithium battery	20	20	5V/2A	2	187x90x47	1580x670x35	No	7	32V/ 200W – Mono crystalline (for charging 12/24V battery)
SA01.SL 200W.H	12/24 (Automatically identify)	For water battery, dry battery, lithium battery	20	20	5V/2A	No	187x90x47	1580x670x35	IP box, protective, anti - salt box	7	32V/ 200W – Mono crystalline (for charging 12/24V battery)

LANDSCAPE SOLAR LIGHTS

SAMSUNG
LED

Illuminated



FEATURES

- Smart charge, discharge control enable battery protection and longer lighting time.
- Auto turning on/ off with light sensor or auto change brightness/ CCT with sound sensor when someone is near.
- Using Samsung LED for high efficiency and high quality.

APPLICATIONS

- Used in yards, gardens, villas, hotels, beach resorts, penthouses, apartments, etc.
- Used in parks, walkways, landscapes, sites, historic sites, cemeteries, pedestrian bridges, memorials, etc.

Model	Power (W)	Solar battery	Solar panel	Lighting angle	CCT (K)	Dimension (mm)	Lighting time (Giò)	IP	Weight (Kg)
DSV01.SL 2W	2	Lithium LiFePO4 3.2 V/2 Ah	Mono crystalline 5 V/2 W	Beam angle	3000 6500	Ø185xH550	12	65	1.1
DSV01.SL 3W	3	Lithium LiFePO4 3.7 V/2.6 Ah	Mono crystalline 5 V/3 W	90 D	3000	60 x 100 x 600	24	65	2.4
RD-DSV2204	3	Lithium LiFePO4 3.2 V/8 Ah	Mono crystalline 5 V/4.5 W	Beam angle	3000 6500	Ø260xH250	12	65	2.1

SOLAR UNINTERRUPTIBLE POWER SUPPLY (UPS)



ADVANTAGES

- Used in areas facing frequent blackouts or without power grid.
- Integrated USB output (phone charger, etc.) along with 5VDC or 12VDC outputs (fans, etc.)

FEATURES

- Convert solar power into electricity for lighting without power grid connection.

APPLICATIONS

- Used for camping, outdoor activities, stalls, night markets, etc.
- Used in case of early-morning or late-night work (such as picking tea, farming, etc.).
- Emergency lighting in case of blackouts.

SPECIFICATIONS

Model	Power	CCT (K)	Lighting time (hour)	Warranty (Year)	Solar battery			Solar panel				Wire size (m)
					Technology	Voltage/ Capacity	Lifespan (Year)	Technology	Voltage (V)	Lifespan (Year)	Dimension (mm)	
LD01.SL/5W	5 W	6500	>16	3	LITHIUM LiFePO4	3.2V/13 Ah	>10	Poly-crystalline	5	>20	195x175x17	3
LD01.SL/160Wh	160 Wh	6500	12	3	LITHIUM LiFePO4	12.8V/12 Ah	>10	Poly-crystalline	18	>20	470x350x20	6

SOLAR LIGHT

ACCESSORIES



1. BRACKET SET FOR 70W-90W (ROTATING) FLOODLIGHTS

Material: Corrugated iron + Electrostatic powder coating

Size:

+ 70W: (L x W) = (670 x 100) mm

+ 90W: (L x W) = (673 x 500) mm

Advantages:

For keeping fixed, and for adjusting the solar panel to receive the most sunlight for the highest energy absorption efficiency.



2. BRACKET SET FOR 70W-90W (FIXED) FLOODLIGHTS

Material: Corrugated iron + Electrostatic powder coating + Steel

Size: (L x W) = (673 x 500) mm

Advantages:

+ Keeping the solar panel fixed

+ Used for both 70W and 90W floodlights



3. LIGHT POLE ARMS FOR 15W-20W SOLAR LIGHTS

Material: Corrugated iron + ESD painted sheet metal + Steel

Size:

+ Ø190mm: (L x W) = (1050 x 280) mm

+ Ø230mm: (L x W) = (1050 x 320) mm

Advantages:

+ Attaching the solar street light to the pole in use

+ Save installation costs



4. EXTENSION WIRE FOR 50W - 70W - 90W SOLAR LIGHTS

Specifications:

Wire cross section:

+ (2 x 0.75) mm (CP01.SL.RF 50W) - 2m or 3m long

+ (2 x 2.5) mm (CP01.SL 70W/90W) - 2m or 3m long

Advantages:

+ Increasing the wire length when connecting the solar panel to the light.

+ Suitable for solar lights installed at high positions.



RANG DONG LIGHT SOURCE AND VACUUM FLASK JOINT STOCK COMPANY

📍 Head office / Factory no.1: 87-89 Ha Dinh Str., Thanh Xuan Dist., Hanoi, Vietnam
2nd base: Que Vo Industrial Area, Bac Ninh Province

🌐 www.en.rangdong.com.vn

☎ +84 24 38584310

✉ export@rangdong.com.vn

📘 RangDong Vietnam